



# Literacy Options for EPPs

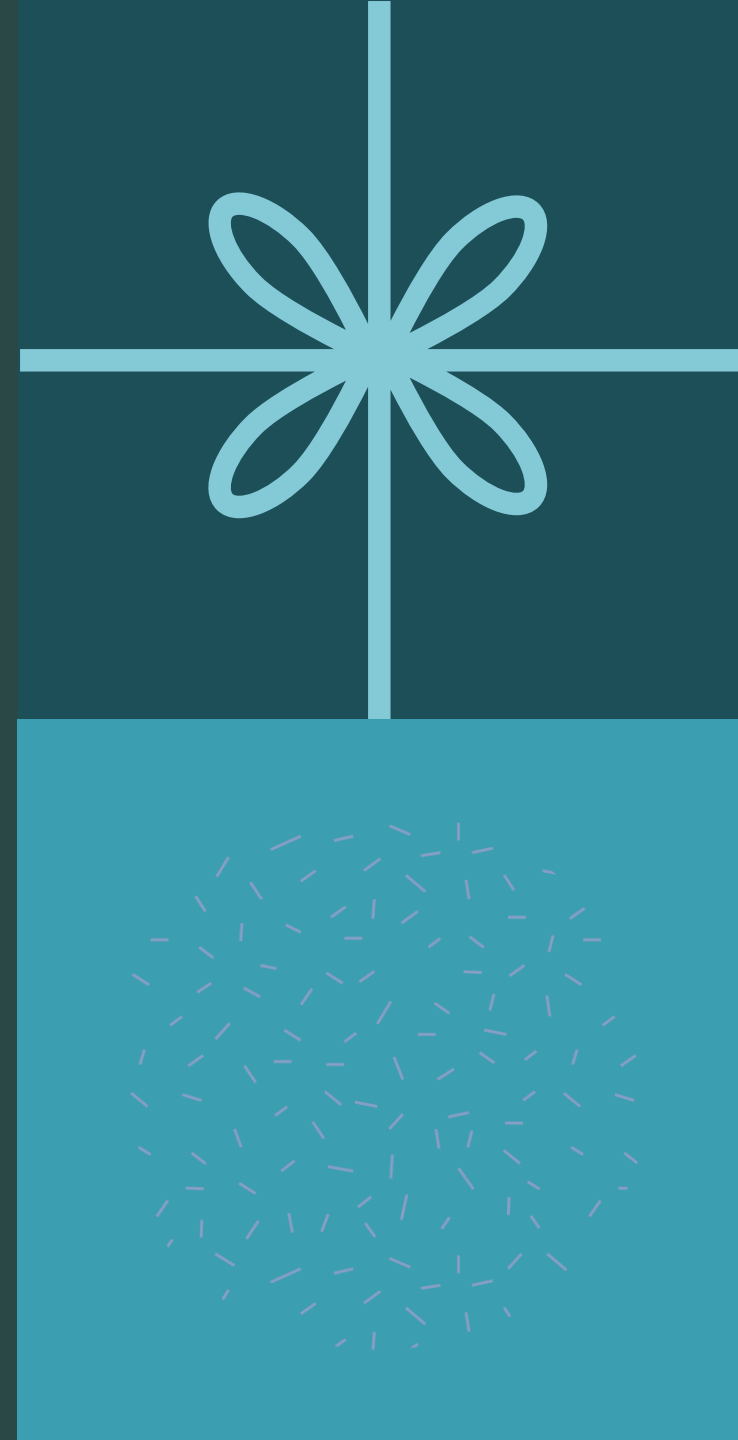
Program Rules and Guidance for Programs that Expand Literacy Learning

Dr. Rebecca Pennington, Education Specialist

Contact: [rebecca.pennington@gapsc.com](mailto:rebecca.pennington@gapsc.com)

# Welcome!

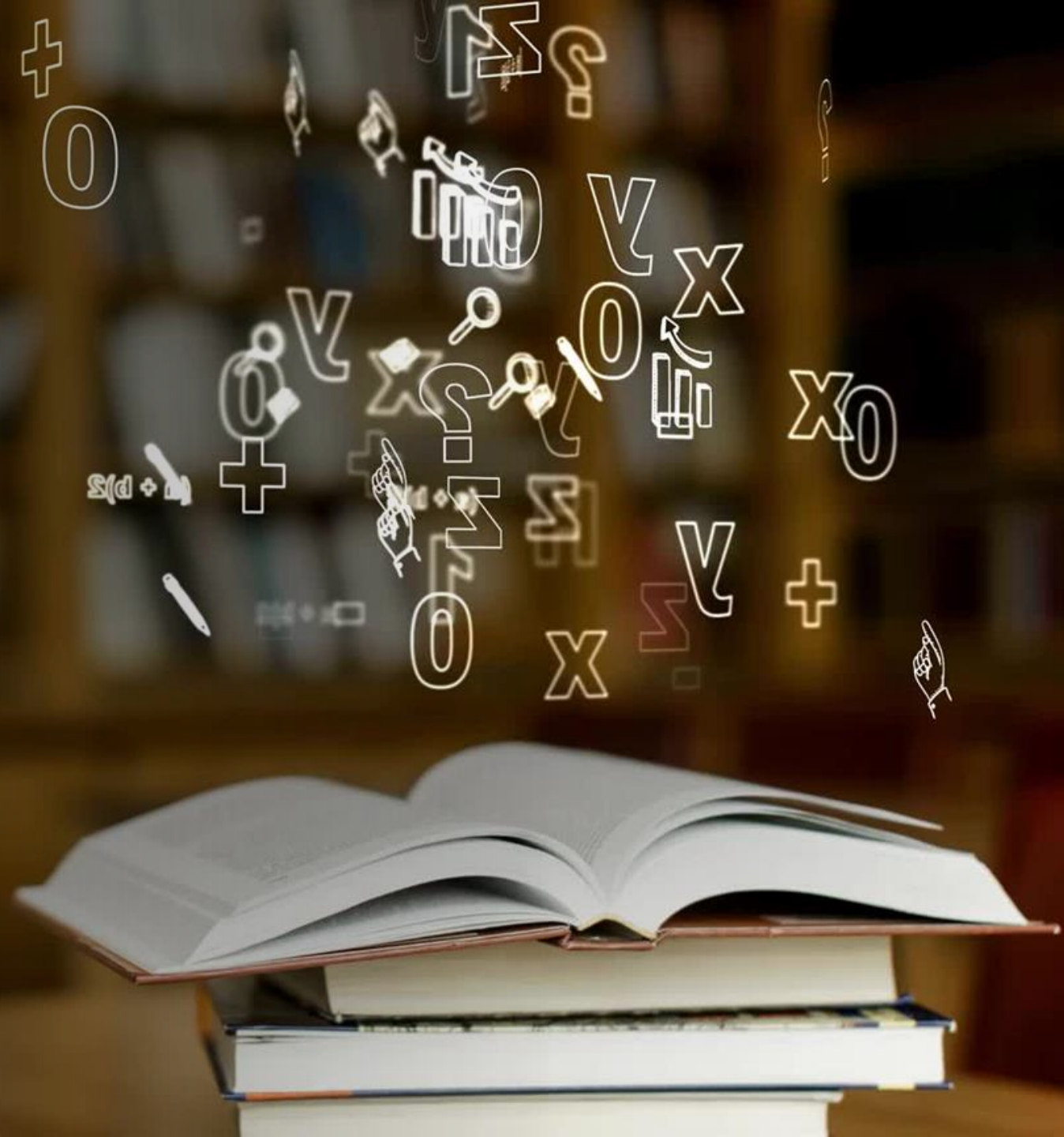
- Thank you for attending this webinar, “Literacy Options for EPPS”.
- To access this slide deck, please use the following instructions:
  - Go to [www.gapsc.com](http://www.gapsc.com)
  - Point to **Educator Preparation** in the blue bar to open the drop down menu
  - Click on Conference Presentations



# Context



# State-wide Focus on Literacy





# Foundations of Reading, Literacy, and Language Rule 505-3-.03

In January 2023, the Georgia Professional Standards Commission and the University System of Georgia convened a Reading Task Force.

Concurrently, the 2023 Georgia General Assembly passed HB538, the Georgia Early Literacy Act, which was signed into law by Governor Brian Kemp on April 13, 2023.

2023 Legislative session-SB 211 signed by Governor Kemp:

- Established the Georgia Council on Literacy for the purpose of conducting comprehensive reviews of birth to postsecondary programs,
- Ensures the alignment of state support for such programs, and other Georgia Professional Standards aimed at improving the literacy outcomes of Georgia students (SB211, 2023).

# GACE Testing Basics

$x^2$



## 505-3-.03

# Foundations of Reading, Literacy, and Language

The adoption of  
**GaPSC Rule  
505-3-.03,**  
Foundations of  
Reading,  
Literacy, and  
Language:

- Aligns Georgia educator preparation with these legislative measures
- Impacts Georgia EPPs by specifying standards grounded in the science of reading that describe the knowledge and skills pre-service teachers must acquire by the completion of a preparation program.

The Foundations  
of Reading,  
Literacy, and  
Language  
**Implementation  
Guide** is  
available on the  
Gapsc.com  
website.

- This document includes the implementation guideline for October 2023 and October 2024 submissions.
- Click [here](#) for link.

# What is required of EPPs?

Align programs of study by creating Curriculum Maps, Assignments, Assessments for all candidates.

Two levels of knowledge: “awareness” and “demonstration”

Two levels of GACE: **Fundamentals** of Sor and **Application** of SoR



# Program Options to Expand Literacy Knowledge

$x^2$



# Beyond the Basics



READING  
ENDORSEMENT



LITERACY SPECIALIST



READING EDUCATION  
(P-12)



DYSLEXIA  
ENDORSEMENT

# Reading Endorsement

Requires Level 4 Teaching Certification

P-12 Level, Expands Knowledge

Rule 505-3-.96 Reading Endorsement

# Adapted from ILA Standards (2017)



- Offered by IHEs, GaTAPP, RESAs
- Often includes 3-4 courses
- Some online options
- Requires field experiences
- No GACE required

## 505-3-.96 READING ENDORSEMENT

(1) **Purpose.** This rule states field-specific content standards for approving endorsement programs that prepare individuals with enhanced knowledge and skills to teach reading to students in grades P-12, and supplements requirements in GaPSC Rule [505-3-.01 REQUIREMENTS AND STANDARDS FOR APPROVING EDUCATOR PREPARATION PROVIDERS AND EDUCATOR PREPARATION PROGRAMS](#). This endorsement is intended to build upon the knowledge and skills described in GaPSC Rule [505-3-.03 FOUNDATIONS OF READING, LITERACY, AND LANGUAGE](#).

# Reading Endorsement

INSTITUTIONS WITH AN APPROVED PROGRAM IN READING ENDORSEMENT	GAPSC-Approved Endorsement Programs
Click on an Institution below for more information.	
<a href="#">Albany State University</a>	<a href="#">Yes</a>
<a href="#">Augusta University</a>	<a href="#">Yes</a>
<a href="#">Bibb County Public School District</a>	<a href="#">Yes</a>
<a href="#">Brenau University</a>	<a href="#">Yes</a>
<a href="#">Central Savannah River Area RESA</a>	<a href="#">Yes</a>
<a href="#">Chattahoochee-Flint RESA</a>	<a href="#">Yes</a>
<a href="#">Clayton County Public Schools</a>	<a href="#">Yes</a>
<a href="#">Coastal Plains RESA</a>	<a href="#">Yes</a>
<a href="#">Columbus State University</a>	<a href="#">Yes</a>
<a href="#">Emmanuel University</a>	<a href="#">Yes</a>
<a href="#">Floyd County Schools</a>	<a href="#">Yes</a>
<a href="#">Georgia College and State University</a>	<a href="#">Yes</a>
<a href="#">Georgia Gwinnett College</a>	<a href="#">Yes</a>
<a href="#">Georgia Southern University</a>	<a href="#">Yes</a>
<a href="#">Georgia State University</a>	<a href="#">Yes</a>
<a href="#">Griffin RESA</a>	<a href="#">Yes</a>
<a href="#">Kennesaw State University</a>	<a href="#">Yes</a>

<a href="#">Mercer University</a>	<a href="#">Yes</a>
<a href="#">Metro RESA</a>	<a href="#">Yes</a>
<a href="#">Middle Georgia RESA</a>	<a href="#">Yes</a>
<a href="#">North Georgia RESA</a>	<a href="#">Yes</a>
<a href="#">Northeast Georgia RESA</a>	<a href="#">Yes</a>
<a href="#">Northwest Georgia RESA</a>	<a href="#">Yes</a>
<a href="#">Oconee RESA</a>	<a href="#">Yes</a>
<a href="#">Savannah-Chatham County Public School System</a>	<a href="#">Yes</a>
<a href="#">Southwest Georgia RESA</a>	<a href="#">Yes</a>
<a href="#">Thomas University</a>	<a href="#">Yes</a>
<a href="#">Toccoa Falls College</a>	<a href="#">Yes</a>
<a href="#">University of Georgia</a>	<a href="#">Yes</a>
<a href="#">University of North Georgia</a>	<a href="#">Yes</a>
<a href="#">University of West Georgia</a>	<a href="#">Yes</a>
<a href="#">Valdosta State University</a>	<a href="#">Yes</a>
<a href="#">West Georgia RESA</a>	<a href="#">Yes</a>



# Literacy Specialist

Requires Level 4 Certification; 3 years of teaching

Requires proficiency in reading knowledge from 505-3-.03

P-12 levels, literacy or instructional coaches, teacher-leaders

Rule 505-3-.66 Literacy Specialist

# Adapted from ILA Standards (2017)



- Offered by some EPPs
- May be embedded in an advanced degree
- Some online options
- Requires practicum/clinical practice
- GACE required; no test option

## 505-3-.66 LITERACY SPECIALIST PROGRAM

**(1) Purpose.** This rule states field-specific content standards for approving programs that prepare individuals to serve as literacy specialists (e.g., literacy coaches, instructional coaches, teacher leaders) in grades P-12, in accordance with GaPSC Rule [505-3-.03 FOUNDATIONS OF READING, LITERACY, AND LANGUAGE](#), and supplements requirements in GaPSC Rule [505-3-.01, REQUIREMENTS AND STANDARDS FOR APPROVING EDUCATOR PREPARATION PROVIDERS AND EDUCATOR PREPARATION PROGRAMS](#). This field is classified as a service (S) field and therefore may not be added by passing the state-approved content assessment.

# Literacy Specialist

INSTITUTIONS WITH AN APPROVED PROGRAM IN LITERACY SPECIALIST (P-12)  Click on an Institution below for more information.	GATAPP	Certification-only (post- baccalaureate/ non-degree)	Baccalaureate	Master's(M.A.T. or Equivalent)	Specialist	Doctorate
<a href="#">Georgia State University</a>	No	<a href="#">Yes</a>	No	No	<a href="#">Yes</a>	No
<a href="#">Kennesaw State University</a>	No	No	No	<a href="#">Yes</a>	No	No
<a href="#">University of Georgia</a>	No	No	No	No	<a href="#">Yes</a>	No
<a href="#">University of West Georgia</a>	No	No	No	<a href="#">Yes</a>	No	No

# Reading Education (P-12)

Requires Level 4 Teaching Certification; 3 years of teaching

Offered at the Master's degree or higher level

P-12 levels, prepares teachers of reading and literacy related topics

Rule 505-3-.51 Reading Education Program

# Adapted from ILA Standards (2017)



- Currently no approved programs
- Requires practicum/clinical practice
- GACE required; no test option

Opportunity for  
Innovation!

## 505-3-.51 READING EDUCATION PROGRAM

**(1) Purpose.** This rule states field-specific content standards for approving programs that prepare individuals to serve as teachers of reading and related literacy topics in grades P-12, in accordance with GaPSC [Rule 505-3-.03 FOUNDATIONS OF READING, LITERACY, AND LANGUAGE](#), and supplements requirements in GaPSC Rule [505-3-.01 REQUIREMENTS AND STANDARDS FOR APPROVING EDUCATOR PREPARATION PROVIDERS AND EDUCATOR PREPARATION PROGRAMS](#). Reading Education programs will be classified as teaching (T) field programs and may be offered for initial certification in the field at the Master's degree level or higher, or as a certification-only program for those holding an advanced degree. All programs leading to initial certification in this field, regardless of degree level, must be approved by the GaPSC.



# Dyslexia Endorsement

Applicable to the field(s) and the grade levels of base certificate

EPPs may offer it as either stand-alone or embedded in a program (approved or advanced)

Enhanced competency for recognizing characteristics of dyslexia

Strengthens competency for supporting students with characteristics of dyslexia

Rule 505-3-.112 Dyslexia Endorsement

# Adapted from International Dyslexia Standards (2018)



- Focus is on **specialized knowledge** to recognize characteristics of dyslexia and support students with dyslexia
- Requires field experiences (endorsement)
- No GACE required; program completion required

Effective August 15, 2023

## 505-3-.112 DYSLEXIA ENDORSEMENT

(1) **Purpose.** This rule states field-specific content standards for approving endorsement programs that prepare individuals to recognize the characteristics of dyslexia and support students with dyslexia in the field and at the grade levels of their base certification and supplements requirements in GaPSC Rule [505-3-.01 REQUIREMENTS AND STANDARDS FOR APPROVING EDUCATOR PREPARATION PROVIDERS AND EDUCATOR PREPARATION PROGRAMS](#).

# Dyslexia Endorsement

- Supplements Dyslexia knowledge required by all teacher preparation programs per Rule .01
- RESAs
- Traditional Higher Education Institutions
- May be embedded in programs

INSTITUTIONS WITH AN APPROVED PROGRAM IN DYSLLEXIA ENDORSEMENT	
Click on an Institution below for more information.	
	GAPSC-Approved Endorsement Programs
Brenau University	<a href="#">Yes</a>
Central Savannah River Area RESA	<a href="#">Yes</a>
Columbus State University	<a href="#">Yes</a>
First District RESA	<a href="#">Yes</a>
Georgia College and State University	<a href="#">Yes</a>
Georgia State University	<a href="#">Yes</a>
Griffin RESA	<a href="#">Yes</a>
Kennesaw State University	<a href="#">Yes</a>
Mercer University	<a href="#">Yes</a>
Metro RESA	<a href="#">Yes</a>
Middle Georgia RESA	<a href="#">Yes</a>
North Georgia RESA	<a href="#">Yes</a>
Northeast Georgia RESA	<a href="#">Yes</a>
Northwest Georgia RESA	<a href="#">Yes</a>

Okefenokee RESA	<a href="#">Yes</a>
Piedmont University	<a href="#">Yes</a>
Reinhardt University	<a href="#">Yes</a>
Shorter University	<a href="#">Yes</a>
Southwest Georgia RESA	<a href="#">Yes</a>
Thomas University	<a href="#">Yes</a>
Truett-McConnell University	<a href="#">Yes</a>
University of Georgia	<a href="#">Yes</a>
University of North Georgia	<a href="#">Yes</a>
University of West Georgia	<a href="#">Yes</a>
West Georgia RESA	<a href="#">Yes</a>



How can EPPs  
and educators  
collaborate?



# Cultivate Partnerships



Advisory Councils and MOUs



RESA Offerings and Professional Learning



P-20 Partnership Activities



Teacher Candidate Knowledge & Experience



## Links to Rules

[505-3-.96 Reading  
Endorsement](#)

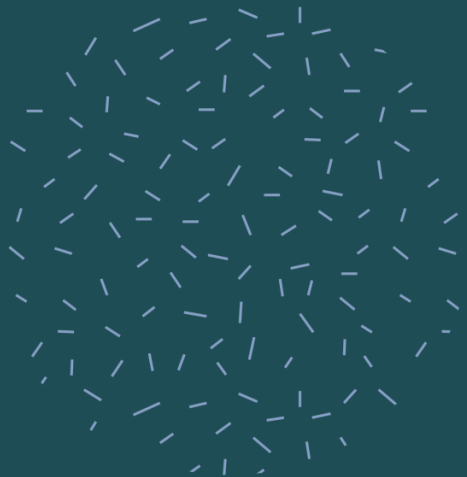
[505-3-.66 Literacy Specialist](#)

[505-3-.51 Reading Education  
\(P-12\)](#)

[505-3-.112 Dyslexia  
Endorsement](#)

# To Consider....

What programs might support teachers as they enhance literacy capabilities  
for PK-12 students?



# Literacy- Adjacent Options

## Programs:

505-3-.65 School Librarian Program

505-3-.70 Speech-Language Associate Program

505-3-. 71 Speech and Language Pathology Program

## Endorsements:

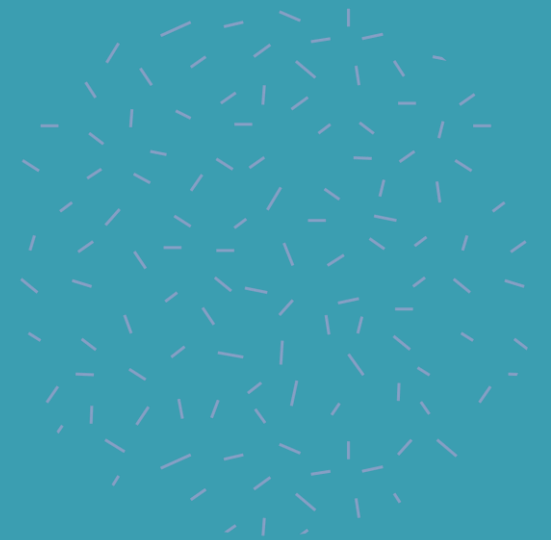
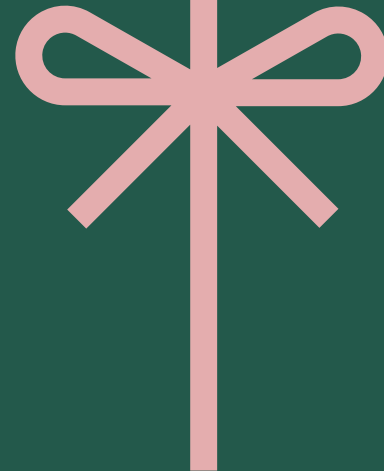
505-3-.85 Coaching Endorsement (for literacy coaching knowledge)

505-3-.89 English to Speakers of Other Languages (ESOL) Endorsement

505-3-.97 STEAM Education Endorsement (NEW!) (Transdisciplinary)

505-.3-105 Teacher Support and Coaching (TSC) Endorsement (Support new teachers in SoR)

Any  
questions?



# Survey

